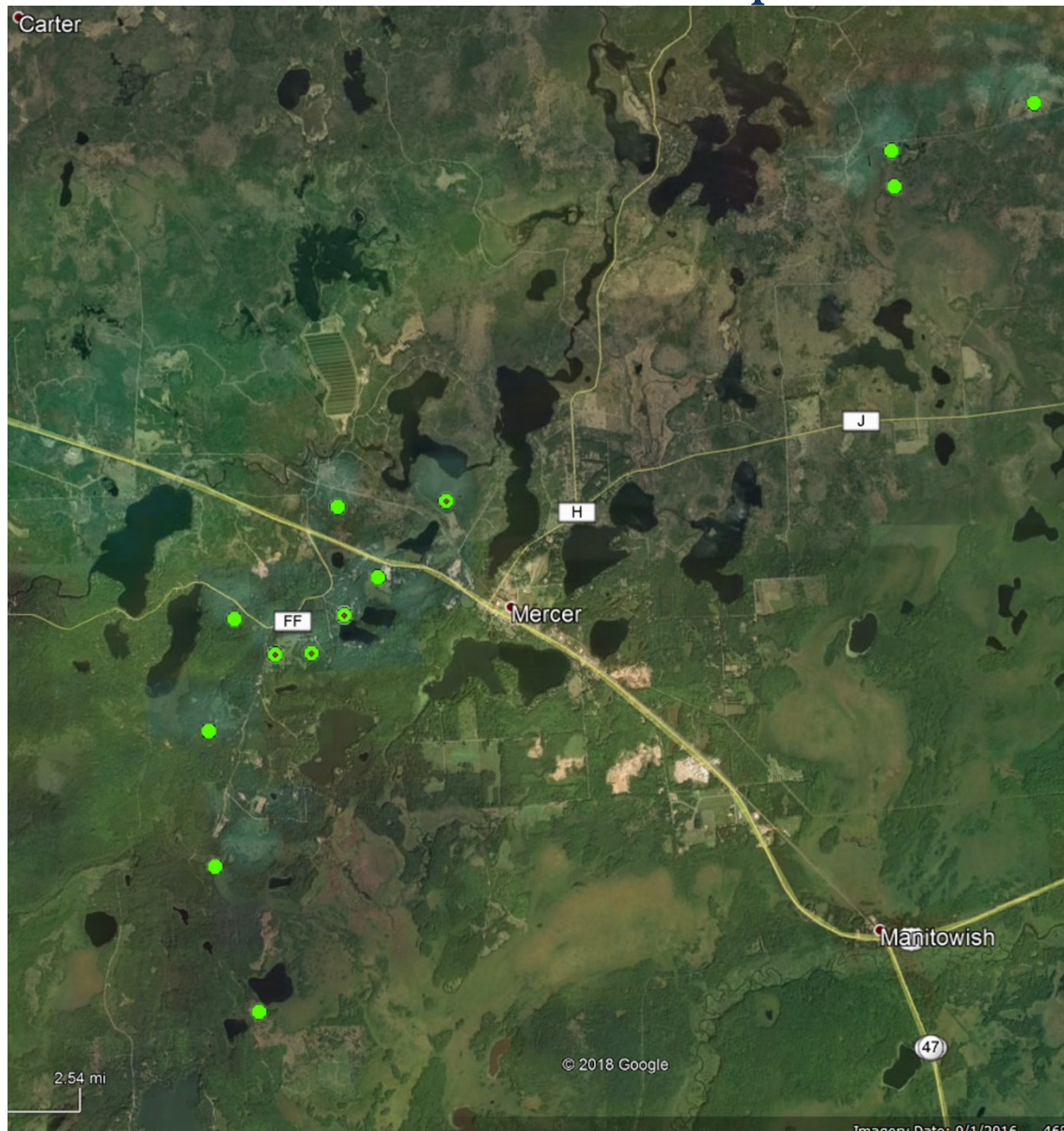


The Mercer Gold Deposit



This is a composite map of the Mercer, Wisconsin area. The base map is from Google Earth.

The light purple and blue shading is an overlay on the map from a recent USGS aeromagnetic survey. The purple shading shows the presence of ferrous metals (iron). The light blue shading shows the presence of non-ferrous metals (gold, silver, zinc, etc.) The green dots are the locations of test bores by Kerr-McGee done in the 1980's in search of gold. These locations were provided by the Wisconsin Geologic and Natural History Survey. Mr. Tom Evans of that organization described the *Mercer Gold Deposit* as "not inconsequential." You can see that Kerr-McGee was not far off in most instances, without the advanced technology of aero magnetics. Where is your house on this map?